



## WHITEHAVEN CHPP – MONTHLY MONITORING SUMMARY

### Site Information

EPL No: 3637

EPA Website Link: <http://www.epa.nsw.gov.au/prpoeoapp/ViewPOEOLicence.aspx?DOCID=33514&SYSUID=1&LICID=3637>

Licensee: Whitehaven Coal Mining Limited

Licensee Address: Boggabri Road, Gunnedah NSW 2380

EPL Monitoring Points: See Figure 1 below

Sampling Period: January 2025

Obtained Date: 21<sup>st</sup> February 2025

Publication Date: 24<sup>th</sup> February 2025

**Table 1 - No Pollutant Limits Apply**

EPL ID	Pollutant	Units of Measure	Monitoring Frequency	No. of Measurements for the Month	Date Sampled	Date Obtained	Min Value	Mean Value	Median Value	Max or Only Value
3	Solid Particles	g/m <sup>2</sup> /month	Continuous	1	06/01/2025	30/01/2025	-	-	-	1.5
11	PM <sub>10</sub> Kendo	µg/m <sup>3</sup>	Every 6 days	5	06/01/2025 12/01/2025 18/01/2025 24/01/2025 30/01/2025	21/02/2025 (Last sampled received)	4.3	12.82	14.7	18.9
12	PM <sub>10</sub> Olive View	µg/m <sup>3</sup>	Every 6 days	5	06/01/2025 12/01/2025 18/01/2025 24/01/2025 30/01/2025	21/02/2025 (Last sampled received)	3.3	14.04	15.5	22.1
6	Conductivity	µs/cm	Each overflow event	0	-	-	-	-	-	-
	Oil and Grease	mg/L					-	-	-	-
	Total Organic Carbon	mg/L					-	-	-	-
	Total Suspended Solids	mg/L					-	-	-	-
	pH	pH					-	-	-	-
7	Conductivity	µs/cm	Quarterly	0	-	-	-	-	-	-
	Oil and Grease	mg/L					-	-	-	-
	Total Organic Carbon	mg/L					-	-	-	-



### WHITEHAVEN CHPP – MONTHLY MONITORING SUMMARY

EPL ID	Pollutant	Units of Measure	Monitoring Frequency	No. of Measurements for the Month	Date Sampled	Date Obtained	Min Value	Mean Value	Median Value	Max or Only Value
	Total Suspended Solids	mg/L					-	-	-	-
	pH	pH					-	-	-	-

Table 2 – Groundwater Monitoring (Quarterly – No Limits apply)

EPL ID	Pollutant	Units of Measure	Monitoring Frequency	No. of Samples for the Period	Date Sampled	Date Obtained	Min Value	Mean Value	Median Value	Max or Only Value
8	Ammonia	mg/L	Quarterly (P1)	0	-	-	-	-	-	-
	Bicarbonate	mg/L					-	-	-	-
	Calcium	mg/L					-	-	-	-
	Chloride	mg/L					-	-	-	-
	Conductivity	µs/cm					-	-	-	-
	Lead	mg/L					-	-	-	-
	Magnesium	mg/L					-	-	-	-
	Nitrate	mg/L					-	-	-	-
	Potassium	mg/L					-	-	-	-
	Sodium	mg/L					-	-	-	-
	Standing Water Level	m					-	-	-	-
	Sulphate	mg/L					-	-	-	-
	pH	pH					-	-	-	-
9	Ammonia	mg/L	Quarterly (P2)	0	-	-	-	-	-	-
	Bicarbonate	mg/L					-	-	-	-
	Calcium	mg/L					-	-	-	-
	Chloride	mg/L					-	-	-	-



### WHITEHAVEN CHPP – MONTHLY MONITORING SUMMARY

EPL ID	Pollutant	Units of Measure	Monitoring Frequency	No. of Samples for the Period	Date Sampled	Date Obtained	Min Value	Mean Value	Median Value	Max or Only Value
	Conductivity	µs/cm					-	-	-	-
	Lead	mg/L					-	-	-	-
	Magnesium	mg/L					-	-	-	-
	Nitrate	mg/L					-	-	-	-
	Potassium	mg/L					-	-	-	-
	Sodium	mg/L					-	-	-	-
	Standing Water Level	M					-	-	-	-
	Sulphate	mg/L					-	-	-	-
	pH	pH					-	-	-	-
10	Ammonia	mg/L	Quarterly (P3)	0	-	--	-	-	-	-
	Bicarbonate	mg/L					-	-	-	-
	Calcium	mg/L					-	-	-	-
	Chloride	mg/L					-	-	-	-
	Conductivity	µs/cm					-	-	-	-
	Lead	mg/L					-	-	-	-
	Magnesium	mg/L					-	-	-	-
	Nitrate	mg/L					-	-	-	-
	Potassium	mg/L					-	-	-	-
	Sodium	mg/L					-	-	-	-
	Standing Water Level	M					-	-	-	-
	Sulphate	mg/L					-	-	-	-
	pH	pH					-	-	-	-



## WHITEHAVEN CHPP – MONTHLY MONITORING SUMMARY

Table 3 – Monitoring (Quarterly Noise – Limits Apply)

EPL ID	Date	Measurement Period	Measured levels – CHPP – dB(A)		Limit(s)- dB(A)	Wind speed (m/s)	Observations	(Potential) Non-compliance /breach
			LA1, 1 minute	LAeq, 15 minute				
N1	-	15 mins day	-	-	35	-	-	-
	-	15 mins evening	-	-	35	-	-	
		15 mins night	-	-	35	-	-	
		1 min night	-	-	45			

**Notes:**

**dB(A):** The overall level of a sound is usually expressed in terms of dBA, which is measured using a sound level meter with an “A-weighting” filter. This is an electronic filter having a frequency response corresponding approximately to that of human hearing.

**LAeq, 15 minute:** The A-weighted equivalent noise level (basically the average noise level). It is defined as the steady sound level that contains the same amount of acoustical energy as the corresponding time-varying sound, in this instance over a period of 15 minutes.

**LA1, 1 minute:** The noise level exceeded for 1% of the 15 minute interval.

**I/A:** When site noise is noted as inaudible (I/A), no site noise was audible at the monitoring location.

**Not Measurable (NM):** indicates that some site noise was audible, but indeterminate due to one of the following reasons:

- site noise levels were insignificant and unlikely, in many cases, to be even noticed; or
- site noise levels were masked by another relatively loud noise source, but were estimated to be less than LAeq 30 dB, which is insignificant in terms of any applicable criterion.



# WHITEHAVEN COAL

## WHITEHAVEN CHPP – MONTHLY MONITORING SUMMARY





## WHITEHAVEN CHPP – MONTHLY MONITORING SUMMARY

### Site Information

EPL No: 3637

EPA Website Link: <http://www.epa.nsw.gov.au/prpoeoapp/ViewPOEOLicence.aspx?DOCID=33514&SYSUID=1&LICID=3637>

Licensee: Whitehaven Coal Mining Limited

Licensee Address: Boggabri Road, Gunnedah NSW 2380

EPL Monitoring Points: See Figure 1 below

Sampling Period: February 2025

Obtained Date: 19<sup>th</sup> March 2025

Publication Date: 19<sup>th</sup> March 2025

**Table 1 - No Pollutant Limits Apply**

EPL ID	Pollutant	Units of Measure	Monitoring Frequency	No. of Measurements for the Month	Date Sampled	Date Obtained	Min Value	Mean Value	Median Value	Max or Only Value
3	Solid Particles	g/m <sup>2</sup> /month	Continuous	1	05/02/2025	10/03/2025	-	-	-	1.3
11	PM <sub>10</sub> Kendo	µg/m <sup>3</sup>	Every 6 days	4	05/02/2025 11/02/2025 17/02/2025 23/02/2025	06/03/2025 (Last sampled received)	8.9	12.53	11.45	18.3
12	PM <sub>10</sub> Olive View	µg/m <sup>3</sup>	Every 6 days	4	06/01/2025 12/01/2025 18/01/2025 24/01/2025	06/03/2025 (Last sampled received)	10.3	13.05	12.45	17.0
6	Conductivity	µs/cm	Each overflow event	0			-	-	-	-
	Oil and Grease	mg/L					-	-	-	-
	Total Organic Carbon	mg/L					-	-	-	-
	Total Suspended Solids	mg/L					-	-	-	-
	pH	pH					-	-	-	-
7	Conductivity	µs/cm	Quarterly	1	25/02/2025	19/03/2025	-	-	-	1960
	Oil and Grease	mg/L					-	-	-	<5
	Total Organic Carbon	mg/L					-	-	-	26
	Total Suspended Solids	mg/L					-	-	-	41



### WHITEHAVEN CHPP – MONTHLY MONITORING SUMMARY

EPL ID	Pollutant	Units of Measure	Monitoring Frequency	No. of Measurements for the Month	Date Sampled	Date Obtained	Min Value	Mean Value	Median Value	Max or Only Value
	pH	pH					-	-	-	8.56

Table 2 – Groundwater Monitoring (Quarterly – No Limits apply)

EPL ID	Pollutant	Units of Measure	Monitoring Frequency	No. of Samples for the Period	Date Sampled	Date Obtained	Min Value	Mean Value	Median Value	Max or Only Value
8	Ammonia	mg/L	Quarterly (P1)	0	-	-	-	-	-	-
	Bicarbonate	mg/L					-	-	-	-
	Calcium	mg/L					-	-	-	-
	Chloride	mg/L					-	-	-	-
	Conductivity	µs/cm					-	-	-	-
	Lead	mg/L					-	-	-	-
	Magnesium	mg/L					-	-	-	-
	Nitrate	mg/L					-	-	-	-
	Potassium	mg/L					-	-	-	-
	Sodium	mg/L					-	-	-	-
	Standing Water Level	m					-	-	-	-
	Sulphate	mg/L					-	-	-	-
pH	pH	-	-	-	-					
9	Ammonia	mg/L	Quarterly (P2)	0	-	-	-	-	-	-
	Bicarbonate	mg/L					-	-	-	-
	Calcium	mg/L					-	-	-	-
	Chloride	mg/L					-	-	-	-
	Conductivity	µs/cm					-	-	-	-



### WHITEHAVEN CHPP – MONTHLY MONITORING SUMMARY

EPL ID	Pollutant	Units of Measure	Monitoring Frequency	No. of Samples for the Period	Date Sampled	Date Obtained	Min Value	Mean Value	Median Value	Max or Only Value
	Lead	mg/L					-	-	-	-
	Magnesium	mg/L					-	-	-	-
	Nitrate	mg/L					-	-	-	-
	Potassium	mg/L					-	-	-	-
	Sodium	mg/L					-	-	-	-
	Standing Water Level	M					-	-	-	-
	Sulphate	mg/L					-	-	-	-
	pH	pH					-	-	-	-
10	Ammonia	mg/L	Quarterly (P3)	0	-	--	-	-	-	-
	Bicarbonate	mg/L					-	-	-	-
	Calcium	mg/L					-	-	-	-
	Chloride	mg/L					-	-	-	-
	Conductivity	µs/cm					-	-	-	-
	Lead	mg/L					-	-	-	-
	Magnesium	mg/L					-	-	-	-
	Nitrate	mg/L					-	-	-	-
	Potassium	mg/L					-	-	-	-
	Sodium	mg/L					-	-	-	-
	Standing Water Level	M					-	-	-	-
	Sulphate	mg/L					-	-	-	-
	pH	pH					-	-	-	-



## WHITEHAVEN CHPP – MONTHLY MONITORING SUMMARY

Table 3 – Monitoring (Quarterly Noise – Limits Apply)

EPL ID	Date	Measurement Period	Measured levels – CHPP – dB(A)		Limit(s)- dB(A)	Wind speed (m/s)	Observations	(Potential) Non-compliance /breach
			LA1, 1 minute	LAeq, 15 minute				
N1	-	15 mins day	-	-	35	-	-	-
	-	15 mins evening	-	-	35	-	-	
		15 mins night	-	-	35	-	-	
		1 min night	-	-	45			

Notes:

**dB(A):** The overall level of a sound is usually expressed in terms of dBA, which is measured using a sound level meter with an “A-weighting” filter. This is an electronic filter having a frequency response corresponding approximately to that of human hearing.

**LAeq, 15 minute:** The A-weighted equivalent noise level (basically the average noise level). It is defined as the steady sound level that contains the same amount of acoustical energy as the corresponding time-varying sound, in this instance over a period of 15 minutes.

**LA1, 1 minute:** The noise level exceeded for 1% of the 15 minute interval.

**I/A:** When site noise is noted as inaudible (I/A), no site noise was audible at the monitoring location.

**Not Measurable (NM):** indicates that some site noise was audible, but indeterminate due to one of the following reasons:

- site noise levels were insignificant and unlikely, in many cases, to be even noticed; or
- site noise levels were masked by another relatively loud noise source, but were estimated to be less than LAeq 30 dB, which is insignificant in terms of any applicable criterion.



# WHITEHAVEN COAL

## WHITEHAVEN CHPP – MONTHLY MONITORING SUMMARY





## WHITEHAVEN CHPP – MONTHLY MONITORING SUMMARY

### Site Information

EPL No: 3637

EPA Website Link: <http://www.epa.nsw.gov.au/prpoeoapp/ViewPOEOLicence.aspx?DOCID=33514&SYSUID=1&LICID=3637>

Licensee: Whitehaven Coal Mining Limited

Licensee Address: Boggabri Road, Gunnedah NSW 2380

EPL Monitoring Points: See Figure 1 below

Sampling Period: March 2025

Obtained Date: 07<sup>th</sup> May 2025

Publication Date: 07<sup>th</sup> May 2025

Table 1 - No Pollutant Limits Apply

EPL ID	Pollutant	Units of Measure	Monitoring Frequency	No. of Measurements for the Month	Date Sampled	Date Obtained	Min Value	Mean Value	Median Value	Max or Only Value
3	Solid Particles	g/m <sup>2</sup> /month	Continuous	1	06/03/2025	07/05/2025	-	-	-	0.6
11	PM <sub>10</sub> Kendo	µg/m <sup>3</sup>	Every 6 days	6	01/03/2025 07/03/2025 13/03/2025 19/03/2025 25/03/2025 31/03/2025	15/04/2025 (Last sampled received)	5.6	20.90	8.95	68.20
12	PM <sub>10</sub> Olive View	µg/m <sup>3</sup>	Every 6 days	6	01/03/2025 07/03/2025 13/03/2025 19/03/2025 25/03/2025 31/03/2025	15/04/2025 (Last sampled received)	5.50	18.83	19.75	32.30
6	Conductivity	µs/cm	Each overflow event	0	-	-	-	-	-	-
	Oil and Grease	mg/L					-	-	-	-
	Total Organic Carbon	mg/L					-	-	-	-
	Total Suspended Solids	mg/L					-	-	-	-
	pH	pH					-	-	-	-
7	Conductivity	µs/cm	Quarterly	0	-	-	-	-	-	-
	Oil and Grease	mg/L					-	-	-	-



### WHITEHAVEN CHPP – MONTHLY MONITORING SUMMARY

EPL ID	Pollutant	Units of Measure	Monitoring Frequency	No. of Measurements for the Month	Date Sampled	Date Obtained	Min Value	Mean Value	Median Value	Max or Only Value
	Total Organic Carbon	mg/L					-	-	-	-
	Total Suspended Solids	mg/L					-	-	-	-
	pH	pH					-	-	-	8.56

Table 2 – Groundwater Monitoring (Quarterly – No Limits apply)

EPL ID	Pollutant	Units of Measure	Monitoring Frequency	No. of Samples for the Period	Date Sampled	Date Obtained	Min Value	Mean Value	Median Value	Max or Only Value
8	Ammonia	mg/L	Quarterly (P1)	1	06/03/2025	13/03/2025	-	-	-	0.23
	Bicarbonate	mg/L					-	-	-	1360
	Calcium	mg/L					-	-	-	54
	Chloride	mg/L					-	-	-	2180
	Conductivity	µs/cm					-	-	-	10300
	Lead	mg/L					-	-	-	<0.001
	Magnesium	mg/L					-	-	-	189
	Nitrate	mg/L					-	-	-	0.74
	Potassium	mg/L					-	-	-	40
	Sodium	mg/L					-	-	-	2080
	Standing Water Level	m					-	-	-	6.87
	Sulphate	mg/L					-	-	-	1310
pH	pH	-	-	-	7.86					
9	Ammonia	mg/L	Quarterly (P2)	1	06/03/2025	13/03/2025	-	-	-	1.10
	Bicarbonate	mg/L					-	-	-	975
	Calcium	mg/L					-	-	-	263



### WHITEHAVEN CHPP – MONTHLY MONITORING SUMMARY

EPL ID	Pollutant	Units of Measure	Monitoring Frequency	No. of Samples for the Period	Date Sampled	Date Obtained	Min Value	Mean Value	Median Value	Max or Only Value
	Chloride	mg/L					-	-	-	1060
	Conductivity	µs/cm					-	-	-	5870
	Lead	mg/l					-	-	-	0.001
	Magnesium	mg/L					-	-	-	228
	Nitrate	mg/L					-	-	-	0.58
	Potassium	mg/L					-	-	-	125
	Sodium	mg/L					-	-	-	652
	Standing Water Level	M					-	-	-	2.11
	Sulphate	mg/L					-	-	-	627
	pH	pH					-	-	-	7.09
10	Ammonia	mg/L	Quarterly (P3)	1	06/03/2025	13/03/2025	-	-	-	0.25
	Bicarbonate	mg/L					-	-	-	776
	Calcium	mg/L					-	-	-	210
	Chloride	mg/L					-	-	-	1320
	Conductivity	µs/cm					-	-	-	5960
	Lead	mg/L					-	-	-	<0.001
	Magnesium	mg/L					-	-	-	220
	Nitrate	mg/L					-	-	-	0.04
	Potassium	mg/L					-	-	-	74
	Sodium	mg/L					-	-	-	666
	Standing Water Level	M					-	-	-	1.64
	Sulphate	mg/L					-	-	-	270
	pH	pH					-	-	-	7.10



## WHITEHAVEN CHPP – MONTHLY MONITORING SUMMARY

**Table 3 – Monitoring (Quarterly Noise – Limits Apply)**

EPL ID	Date	Measurement Period	Measured levels – CHPP – dB(A)		Limit(s)- dB(A)	Wind speed (m/s)	Observations	(Potential) Non-compliance /breach
			LA1, 1 minute	LAeq, 15 minute				
N1	24/03/2025	15 mins day	-	30	35	1.5	Dozer operations, Birds 36-51 Machinery 36-41	No
		15 mins evening	-	35	35	1.4	Dozer operations 30, General site activity 25-31, Insects 40-43, Animals 53-59	
		15 mins night	-	30	35	1.2	Dozer operations 30-39, General site activity 28-31, Traffic 30-38, Animals 42-56	
		1 min night	39	-	45			

**Notes:**

**dB(A):** The overall level of a sound is usually expressed in terms of dBA, which is measured using a sound level meter with an “A-weighting” filter. This is an electronic filter having a frequency response corresponding approximately to that of human hearing.

**LAeq, 15 minute:** The A-weighted equivalent noise level (basically the average noise level). It is defined as the steady sound level that contains the same amount of acoustical energy as the corresponding time-varying sound, in this instance over a period of 15 minutes.

**LA1, 1 minute:** The noise level exceeded for 1% of the 15 minute interval.

**I/A:** When site noise is noted as inaudible (I/A), no site noise was audible at the monitoring location.

**Not Measurable (NM):** indicates that some site noise was audible, but indeterminate due to one of the following reasons:

- site noise levels were insignificant and unlikely, in many cases, to be even noticed; or
- site noise levels were masked by another relatively loud noise source, but were estimated to be less than LAeq 30 dB, which is insignificant in terms of any applicable criterion.



# WHITEHAVEN COAL

## WHITEHAVEN CHPP – MONTHLY MONITORING SUMMARY




 **WHITEHAVEN COAL**

Datum MGA2020 Zone 56 Author O.Hulbert

Image Nov-22 Date Jan-23 Size/Scale 1:13000

**Figure 1**  
**Gunnedah CHPP EPL3637**  
**Monitoring Locations**

0 250 500  
Meters

 CHPP\_EPL\_Sites\_Feb23



## WHITEHAVEN CHPP – MONTHLY MONITORING SUMMARY

### Site Information

**EPL No:** 3637

**EPA Website Link:** <http://www.epa.nsw.gov.au/prpoeoapp/ViewPOEOLicence.aspx?DOCID=33514&SYSUID=1&LICID=3637>

**Licensee:** Whitehaven Coal Mining Limited

**Licensee Address:** Boggabri Road, Gunnedah NSW 2380

**EPL Monitoring Points:** See Figure 1 below

**Sampling Period:** April 2025

**Obtained Date:** 16<sup>th</sup> May 2025

**Publication Date:** 19<sup>th</sup> May 2025

**Table 1 - No Pollutant Limits Apply**

EPL ID	Pollutant	Units of Measure	Monitoring Frequency	No. of Measurements for the Month	Date Sampled	Date Obtained	Min Value	Mean Value	Median Value	Max or Only Value
3	Solid Particles	g/m <sup>2</sup> /month	Continuous	1	07/04/2025	07/05/2025	-	-	-	2.2
11	PM <sub>10</sub> Kendo	µg/m <sup>3</sup>	Every 6 days	5	06/04/2025 12/04/2025 18/04/2025 24/04/2025 30/04/2025	16/05/2025 (Last sampled received)	8.10	12.64	9.0	23.60
12	PM <sub>10</sub> Olive View	µg/m <sup>3</sup>	Every 6 days	5	06/04/2025 12/04/2025 18/04/2025 24/04/2025 30/04/2025	16/05/2025 (Last sampled received)	1.0	5.22	4.0	15.10
6	Conductivity	µs/cm	Each overflow event	1	02/04/2025	10/04/2025	-	-	-	916
	Oil and Grease	mg/L					-	-	-	<5
	Total Organic Carbon	mg/L					-	-	-	7
	Total Suspended Solids	mg/L					-	-	-	37
	pH	pH					-	-	-	7.24
7	Conductivity	µs/cm	Quarterly	0	-	-	-	-	-	-
	Oil and Grease	mg/L					-	-	-	-
	Total Organic Carbon	mg/L					-	-	-	-



### WHITEHAVEN CHPP – MONTHLY MONITORING SUMMARY

EPL ID	Pollutant	Units of Measure	Monitoring Frequency	No. of Measurements for the Month	Date Sampled	Date Obtained	Min Value	Mean Value	Median Value	Max or Only Value
	Total Suspended Solids	mg/L					-	-	-	-
	pH	pH					-	-	-	-

Table 2 – Groundwater Monitoring (Quarterly – No Limits apply)

EPL ID	Pollutant	Units of Measure	Monitoring Frequency	No. of Samples for the Period	Date Sampled	Date Obtained	Min Value	Mean Value	Median Value	Max or Only Value
8	Ammonia	mg/L	Quarterly (P1)	0	-	-	-	-	-	-
	Bicarbonate	mg/L					-	-	-	-
	Calcium	mg/L					-	-	-	-
	Chloride	mg/L					-	-	-	-
	Conductivity	µs/cm					-	-	-	-
	Lead	mg/L					-	-	-	-
	Magnesium	mg/L					-	-	-	-
	Nitrate	mg/L					-	-	-	-
	Potassium	mg/L					-	-	-	-
	Sodium	mg/L					-	-	-	-
	Standing Water Level	m					-	-	-	-
	Sulphate	mg/L					-	-	-	-
pH	pH	-	-	-	-					
9	Ammonia	mg/L	Quarterly (P2)	0	-	-	-	-	-	-
	Bicarbonate	mg/L					-	-	-	-
	Calcium	mg/L					-	-	-	-
	Chloride	mg/L					-	-	-	-



### WHITEHAVEN CHPP – MONTHLY MONITORING SUMMARY

EPL ID	Pollutant	Units of Measure	Monitoring Frequency	No. of Samples for the Period	Date Sampled	Date Obtained	Min Value	Mean Value	Median Value	Max or Only Value
	Conductivity	µs/cm					-	-	-	-
	Lead	mg/L					-	-	-	-
	Magnesium	mg/L					-	-	-	-
	Nitrate	mg/L					-	-	-	-
	Potassium	mg/L					-	-	-	-
	Sodium	mg/L					-	-	-	-
	Standing Water Level	M					-	-	-	-
	Sulphate	mg/L					-	-	-	-
	pH	pH					-	-	-	-
10	Ammonia	mg/L	Quarterly (P3)	0	-	--	-	-	-	-
	Bicarbonate	mg/L					-	-	-	-
	Calcium	mg/L					-	-	-	-
	Chloride	mg/L					-	-	-	-
	Conductivity	µs/cm					-	-	-	-
	Lead	mg/L					-	-	-	-
	Magnesium	mg/L					-	-	-	-
	Nitrate	mg/L					-	-	-	-
	Potassium	mg/L					-	-	-	-
	Sodium	mg/L					-	-	-	-
	Standing Water Level	M					-	-	-	-
	Sulphate	mg/L					-	-	-	-
	pH	pH					-	-	-	-



## WHITEHAVEN CHPP – MONTHLY MONITORING SUMMARY

Table 3 – Monitoring (Quarterly Noise – Limits Apply)

EPL ID	Date	Measurement Period	Measured levels – CHPP – dB(A)		Limit(s)- dB(A)	Wind speed (m/s)	Observations	(Potential) Non-compliance /breach
			LA1, 1 minute	LAeq, 15 minute				
N1	-	15 mins day	-	-	35	-	-	-
	-	15 mins evening	-	-	35	-	-	
		15 mins night	-	-	35	-	-	
		1 min night	-	-	45			

Notes:

**dB(A):** The overall level of a sound is usually expressed in terms of dBA, which is measured using a sound level meter with an “A-weighting” filter. This is an electronic filter having a frequency response corresponding approximately to that of human hearing.

**LAeq, 15 minute:** The A-weighted equivalent noise level (basically the average noise level). It is defined as the steady sound level that contains the same amount of acoustical energy as the corresponding time-varying sound, in this instance over a period of 15 minutes.

**LA1, 1 minute:** The noise level exceeded for 1% of the 15 minute interval.

**I/A:** When site noise is noted as inaudible (I/A), no site noise was audible at the monitoring location.

**Not Measurable (NM):** indicates that some site noise was audible, but indeterminate due to one of the following reasons:


- site noise levels were insignificant and unlikely, in many cases, to be even noticed; or
- site noise levels were masked by another relatively loud noise source, but were estimated to be less than LAeq 30 dB, which is insignificant in terms of any applicable criterion.



# WHITEHAVEN COAL

## WHITEHAVEN CHPP – MONTHLY MONITORING SUMMARY



 <b>WHITEHAVEN COAL</b>	<p align="center"><b>Figure 1</b> <b>Gunnedah CHPP EPL3637</b> <b>Monitoring Locations</b></p>	<p>0      250      500          ───────────          Meters</p>
<p>Datum MGA2020 Zone 56    Author O.Hulbert          Image Nov-22    Date Jan-23    Size/Scale 1:13000</p>		<p>● CHPP_EPL_Sites_Feb23</p>



## WHITEHAVEN CHPP – MONTHLY MONITORING SUMMARY

### Site Information

EPL No: 3637

EPA Website Link: <http://www.epa.nsw.gov.au/prpoeoapp/ViewPOEOLicence.aspx?DOCID=33514&SYSUID=1&LICID=3637>

Licensee: Whitehaven Coal Mining Limited

Licensee Address: Boggabri Road, Gunnedah NSW 2380

EPL Monitoring Points: See Figure 1 below

Sampling Period: May 2025

Obtained Date: 24<sup>th</sup> June 2025

Publication Date: 24<sup>th</sup> June 2025

Table 1 - No Pollutant Limits Apply

EPL ID	Pollutant	Units of Measure	Monitoring Frequency	No. of Measurements for the Month	Date Sampled	Date Obtained	Min Value	Mean Value	Median Value	Max or Only Value
3	Solid Particles	g/m <sup>2</sup> /month	Continuous	1	07/05/2025	24/06/2025	-	-	-	0.9
11	PM <sub>10</sub> Kendo	µg/m <sup>3</sup>	Every 6 days	5	06/05/2025 12/05/2025 18/05/2025 24/05/2025 30/05/2025	17/06/2025 (Last sampled received)	6.10	11.10	8.30	25.70
12	PM <sub>10</sub> Olive View	µg/m <sup>3</sup>	Every 6 days	5	06/05/2025 12/05/2025 18/05/2025 24/05/2025 30/05/2025	17/06/2025 (Last sampled received)	2.50	3.98	3.30	7.30
6	Conductivity	µs/cm	Each overflow event	0	-	-	-	-	-	-
	Oil and Grease	mg/L					-	-	-	-
	Total Organic Carbon	mg/L					-	-	-	-
	Total Suspended Solids	mg/L					-	-	-	-
	pH	pH					-	-	-	-
7	Conductivity	µs/cm	Quarterly (Feb, May, Aug, Nov)	1	19/05/2025	26/05/2025	-	-	-	2080
	Oil and Grease	mg/L					-	-	-	<5
	Total Organic Carbon	mg/L					-	-	-	8



### WHITEHAVEN CHPP – MONTHLY MONITORING SUMMARY

EPL ID	Pollutant	Units of Measure	Monitoring Frequency	No. of Measurements for the Month	Date Sampled	Date Obtained	Min Value	Mean Value	Median Value	Max or Only Value
	Total Suspended Solids	mg/L					-	-	-	26
	pH	pH					-	-	-	7.57

Table 2 – Groundwater Monitoring (Quarterly – No Limits apply)

EPL ID	Pollutant	Units of Measure	Monitoring Frequency	No. of Samples for the Period	Date Sampled	Date Obtained	Min Value	Mean Value	Median Value	Max or Only Value
8	Ammonia	mg/L	Quarterly (P1) (Mar, Jun, Sep, Dec)	0	-	-	-	-	-	-
	Bicarbonate	mg/L					-	-	-	-
	Calcium	mg/L					-	-	-	-
	Chloride	mg/L					-	-	-	-
	Conductivity	µs/cm					-	-	-	-
	Lead	mg/L					-	-	-	-
	Magnesium	mg/L					-	-	-	-
	Nitrate	mg/L					-	-	-	-
	Potassium	mg/L					-	-	-	-
	Sodium	mg/L					-	-	-	-
	Standing Water Level	m					-	-	-	-
	Sulphate	mg/L					-	-	-	-
pH	pH	-	-	-	-					
9	Ammonia	mg/L	Quarterly (P2) (Mar, Jun, Sep, Dec)	0	-	-	-	-	-	-
	Bicarbonate	mg/L					-	-	-	-
	Calcium	mg/L					-	-	-	-
	Chloride	mg/L					-	-	-	-



### WHITEHAVEN CHPP – MONTHLY MONITORING SUMMARY

EPL ID	Pollutant	Units of Measure	Monitoring Frequency	No. of Samples for the Period	Date Sampled	Date Obtained	Min Value	Mean Value	Median Value	Max or Only Value
	Conductivity	µs/cm					-	-	-	-
	Lead	mg/L					-	-	-	-
	Magnesium	mg/L					-	-	-	-
	Nitrate	mg/L					-	-	-	-
	Potassium	mg/L					-	-	-	-
	Sodium	mg/L					-	-	-	-
	Standing Water Level	M					-	-	-	-
	Sulphate	mg/L					-	-	-	-
	pH	pH					-	-	-	-
10	Ammonia	mg/L	Quarterly (P3) (Mar, Jun, Sep, Dec)	0	-	--	-	-	-	-
	Bicarbonate	mg/L					-	-	-	-
	Calcium	mg/L					-	-	-	-
	Chloride	mg/L					-	-	-	-
	Conductivity	µs/cm					-	-	-	-
	Lead	mg/L					-	-	-	-
	Magnesium	mg/L					-	-	-	-
	Nitrate	mg/L					-	-	-	-
	Potassium	mg/L					-	-	-	-
	Sodium	mg/L					-	-	-	-
	Standing Water Level	M					-	-	-	-
	Sulphate	mg/L					-	-	-	-
	pH	pH					-	-	-	-



## WHITEHAVEN CHPP – MONTHLY MONITORING SUMMARY

**Table 3 – Monitoring (Quarterly Noise – Limits Apply)**

(Mar, Jun, Sep, Dec)

EPL ID	Date	Measurement Period	Measured levels – CHPP – dB(A)		Limit(s)- dB(A)	Wind speed (m/s)	Observations	(Potential) Non-compliance /breach
			LA1, 1 minute	LAeq, 15 minute				
N1	-	15 mins day	-	-	35	-	-	-
	-	15 mins evening	-	-	35	-	-	
		15 mins night	-	-	35	-	-	
		1 min night	-	-	45			

Notes:

**dB(A):** The overall level of a sound is usually expressed in terms of dBA, which is measured using a sound level meter with an “A-weighting” filter. This is an electronic filter having a frequency response corresponding approximately to that of human hearing.

**LAeq, 15 minute:** The A-weighted equivalent noise level (basically the average noise level). It is defined as the steady sound level that contains the same amount of acoustical energy as the corresponding time-varying sound, in this instance over a period of 15 minutes.

**LA1, 1 minute:** The noise level exceeded for 1% of the 15 minute interval.

**I/A:** When site noise is noted as inaudible (I/A), no site noise was audible at the monitoring location.

**Not Measurable (NM):** indicates that some site noise was audible, but indeterminate due to one of the following reasons:

- site noise levels were insignificant and unlikely, in many cases, to be even noticed; or
- site noise levels were masked by another relatively loud noise source, but were estimated to be less than LAeq 30 dB, which is insignificant in terms of any applicable criterion.



# WHITEHAVEN COAL

## WHITEHAVEN CHPP – MONTHLY MONITORING SUMMARY

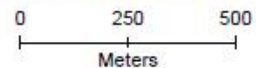


 **WHITEHAVEN COAL**

Datum MGA2020 Zone 56 Author O.Hulbert

Image Nov-22 Date Jan-23 Size/Scale 1:13000

**Figure 1**  
**Gunnedah CHPP EPL3637**  
**Monitoring Locations**



● CHPP\_EPL\_Sites\_Feb23



## WHITEHAVEN CHPP – MONTHLY MONITORING SUMMARY

### Site Information

EPL No: 3637

EPA Website Link: <http://www.epa.nsw.gov.au/prpoeoapp/ViewPOEOLicence.aspx?DOCID=33514&SYSUID=1&LICID=3637>

Licensee: Whitehaven Coal Mining Limited

Licensee Address: Boggabri Road, Gunnedah NSW 2380

EPL Monitoring Points: See Figure 1 below

Sampling Period: June 2025

Obtained Date: 17<sup>th</sup> July 2025

Original Publication Date: 24<sup>th</sup> July 2025

Date of Re-publishing with Correction Log: 11/08/2025

**Table 1 - No Pollutant Limits Apply**

EPL ID	Pollutant	Units of Measure	Monitoring Frequency	No. of Measurements for the Month	Date Sampled	Date Obtained	Min Value	Mean Value	Median Value	Max or Only Value
3	Solid Particles	g/m <sup>2</sup> /month	Continuous	1	05/06/2025	03/07/2025	-	-	-	2.2
11	PM <sub>10</sub> Kendo	µg/m <sup>3</sup>	Every 6 days	5	05/06/2025 11/06/2025 17/06/2025 23/06/2025 29/06/2025	17/07/2025 (Last sampled received)	2.0	13.52	14.60	31.30
12	PM <sub>10</sub> Olive View	µg/m <sup>3</sup>	Every 6 days	5	05/06/2025 11/06/2025 17/06/2025 23/06/2025 29/06/2025	17/07/2025 (Last sampled received)	4.0	10.24	11.60	17.50
6	Conductivity	µs/cm	Each overflow event	0	-	-	-	-	-	-
	Oil and Grease	mg/L					-	-	-	-
	Total Organic Carbon	mg/L					-	-	-	-
	Total Suspended Solids	mg/L					-	-	-	-
	pH	pH					-	-	-	-
7	Conductivity	µs/cm	Quarterly	-	-	-	-	-	-	-
	Oil and Grease	mg/L					-	-	-	-



### WHITEHAVEN CHPP – MONTHLY MONITORING SUMMARY

EPL ID	Pollutant	Units of Measure	Monitoring Frequency	No. of Measurements for the Month	Date Sampled	Date Obtained	Min Value	Mean Value	Median Value	Max or Only Value
	Total Organic Carbon	mg/L	(Feb, May, Aug, Nov)				-	-	-	-
	Total Suspended Solids	mg/L					-	-	-	-
	pH	pH					-	-	-	-

Table 2 – Groundwater Monitoring (Quarterly – No Limits apply)

EPL ID	Pollutant	Units of Measure	Monitoring Frequency	No. of Samples for the Period	Date Sampled	Date Obtained	Min Value	Mean Value	Median Value	Max or Only Value
8	Ammonia	mg/L	Quarterly (P1) (Mar, Jun, Sep, Dec)	0*	*	-	-	-	-	-
	Bicarbonate	mg/L					-	-	-	-
	Calcium	mg/L					-	-	-	-
	Chloride	mg/L					-	-	-	-
	Conductivity	µs/cm					-	-	-	-
	Lead	mg/L					-	-	-	-
	Magnesium	mg/L					-	-	-	-
	Nitrate	mg/L					-	-	-	-
	Potassium	mg/L					-	-	-	-
	Sodium	mg/L					-	-	-	-
	Standing Water Level	m					-	-	-	-
	Sulphate	mg/L					-	-	-	-
pH	pH	-	-	-	-					
9	Ammonia	mg/L	Quarterly (P2)	0*	*	-	-	-	-	-
	Bicarbonate	mg/L					-	-	-	-
	Calcium	mg/L					-	-	-	-



### WHITEHAVEN CHPP – MONTHLY MONITORING SUMMARY

EPL ID	Pollutant	Units of Measure	Monitoring Frequency	No. of Samples for the Period	Date Sampled	Date Obtained	Min Value	Mean Value	Median Value	Max or Only Value
	Chloride	mg/L	(Mar, Jun, Sep, Dec)				-	-	-	-
	Conductivity	µs/cm					-	-	-	-
	Lead	mg/L					-	-	-	-
	Magnesium	mg/L					-	-	-	-
	Nitrate	mg/L					-	-	-	-
	Potassium	mg/L					-	-	-	-
	Sodium	mg/L					-	-	-	-
	Standing Water Level	M					-	-	-	-
	Sulphate	mg/L					-	-	-	-
	pH	pH								
10	Ammonia	mg/L	Quarterly (P3) (Mar, Jun, Sep, Dec)	0*			-	-	-	-
	Bicarbonate	mg/L					-	-	-	-
	Calcium	mg/L					-	-	-	-
	Chloride	mg/L					-	-	-	-
	Conductivity	µs/cm					-	-	-	-
	Lead	mg/L					-	-	-	-
	Magnesium	mg/L					-	-	-	-
	Nitrate	mg/L					-	-	-	-
	Potassium	mg/L					-	-	-	-
	Sodium	mg/L					-	-	-	-
	Standing Water Level	M					-	-	-	-
	Sulphate	mg/L					-	-	-	-
		pH					pH			

\*Sample was taken in June however was re-sampled in July due to lab analysis error.

## WHITEHAVEN CHPP – MONTHLY MONITORING SUMMARY

**Table 3 – Monitoring (Quarterly Noise – Limits Apply)**

(Mar, Jun, Sep, Dec)

EPL ID	Date	Measurement Period	Measured levels – CHPP – dB(A)		Limit(s)- dB(A)	Wind speed (m/s)	Observations	(Potential) Non-compliance /breach
			LA1, 1 minute	LAeq, 15 minute				
N1	26/06/2025	15 mins day	-	NM	35	2.2	Animals 47-62, Traffic 35-41 Farming Machinery 42	No
		15 mins evening	-	33	35	1.0	General site activity 30-33 Traffic 40-49, Train horn 54	
		15 mins night	-	33	35	1.7	General site activity 30-33 Traffic 40-45	
		1 min night	39	-	45			

Notes:

**dB(A):** The overall level of a sound is usually expressed in terms of dBA, which is measured using a sound level meter with an “A-weighting” filter. This is an electronic filter having a frequency response corresponding approximately to that of human hearing.

**LAeq, 15 minute:** The A-weighted equivalent noise level (basically the average noise level). It is defined as the steady sound level that contains the same amount of acoustical energy as the corresponding time-varying sound, in this instance over a period of 15 minutes.

**LA1, 1 minute:** The noise level exceeded for 1% of the 15 minute interval.

**I/A:** When site noise is noted as inaudible (I/A), no site noise was audible at the monitoring location.

**Not Measurable (NM):** indicates that some site noise was audible, but indeterminate due to one of the following reasons:

- site noise levels were insignificant and unlikely, in many cases, to be even noticed; or
- site noise levels were masked by another relatively loud noise source, but were estimated to be less than LAeq 30 dB, which is insignificant in terms of any applicable criterion.



# WHITEHAVEN COAL

## WHITEHAVEN CHPP – MONTHLY MONITORING SUMMARY



 **WHITEHAVEN COAL**

Datum MGA2020 Zone 56 Author O.Hulbert

Image Nov-22 Date Jan-23 Size/Scale 1:13000

**Figure 1**  
**Gunnedah CHPP EPL3637**  
**Monitoring Locations**

0 250 500  
 Meters

● CHPP\_EPL\_Sites\_Feb23



# WHITEHAVEN COAL

## WHITEHAVEN CHPP – MONTHLY MONITORING SUMMARY

### CORRECTION LOG – AUGUST 2025

Month of EPL Monitoring	Sample point	Date of original publishing	Date of Correction	Date of Re-publishing	Correction/s made:
June 2025	11	24 <sup>th</sup> July 2025	11/08/2025	11/08/2025	<ul style="list-style-type: none"> <li>• Changed min value. Original data: 3.30 corrected Data: 2.0</li> <li>• Changed mean value. Original data: 23.30 corrected Data: 13.52</li> <li>• Changed median value. Original data: 25.20 corrected Data: 14.60</li> <li>• Changed Max value. Original data: 54.30 corrected Data: 31.30</li> </ul>
June 2025	12	24 <sup>th</sup> July 2025	11/08/2025	11/08/2025	<ul style="list-style-type: none"> <li>• Changed min value. Original data: 6.7 corrected Data: 4.0</li> <li>• Changed mean value. Original data: 18.0 corrected Data: 10.24</li> <li>• Changed median value. Original data: 20.20 corrected Data: 11.60</li> <li>• Changed Max value. Original data: 30.90 corrected Data: 17.50</li> </ul>



## WHITEHAVEN CHPP – MONTHLY MONITORING SUMMARY

### Site Information

EPL No: 3637

EPA Website Link: <http://www.epa.nsw.gov.au/prpoeoapp/ViewPOEOLicence.aspx?DOCID=33514&SYSUID=1&LICID=3637>

Licensee: Whitehaven Coal Mining Limited

Licensee Address: Boggabri Road, Gunnedah NSW 2380

EPL Monitoring Points: See Figure 1 below

Sampling Period: July 2025

Obtained Date: 11<sup>th</sup> August 2025

Publication Date: 11<sup>th</sup> August 2025

**Table 1 - No Pollutant Limits Apply**

EPL ID	Pollutant	Units of Measure	Monitoring Frequency	No. of Measurements for the Month	Date Sampled	Date Obtained	Min Value	Mean Value	Median Value	Max or Only Value
3	Solid Particles	g/m <sup>2</sup> /month	Continuous	1	07/07/2025	31/07/2025	-	-	-	0.7
11	PM <sub>10</sub> Kendo	µg/m <sup>3</sup>	Every 6 days	5	05/07/2025 11/07/2025 17/07/2025 23/07/2025 29/07/2025	11/08/2025 (Last sampled received)	2.20	8.48	5.90	18.60
12	PM <sub>10</sub> Olive View	µg/m <sup>3</sup>	Every 6 days	5	05/07/2025 11/07/2025 17/07/2025 23/07/2025 29/07/2025	11/08/2025 (Last sampled received)	5.30	8.38	7.50	12.70
6	Conductivity	µs/cm	Each overflow event	0	-	-	-	-	-	-
	Oil and Grease	mg/L					-	-	-	-
	Total Organic Carbon	mg/L					-	-	-	-
	Total Suspended Solids	mg/L					-	-	-	-
	pH	pH					-	-	-	-
7	Conductivity	µs/cm	Quarterly (Feb, May, Aug, Nov)	-	-	-	-	-	-	-
	Oil and Grease	mg/L					-	-	-	-
	Total Organic Carbon	mg/L					-	-	-	-



### WHITEHAVEN CHPP – MONTHLY MONITORING SUMMARY

EPL ID	Pollutant	Units of Measure	Monitoring Frequency	No. of Measurements for the Month	Date Sampled	Date Obtained	Min Value	Mean Value	Median Value	Max or Only Value
	Total Suspended Solids	mg/L					-	-	-	-
	pH	pH					-	-	-	-

Table 2 – Groundwater Monitoring (Quarterly – No Limits apply)

EPL ID	Pollutant	Units of Measure	Monitoring Frequency	No. of Samples for the Period	Date Sampled	Date Obtained	Min Value	Mean Value	Median Value	Max or Only Value
8	Ammonia	mg/L	Quarterly (P1) (Mar, Jun, Sep, Dec)	1*	28/07/2025	04/08/2025	-	-	-	0.48
	Bicarbonate	mg/L					-	-	-	<1
	Calcium	mg/L					-	-	-	70
	Chloride	mg/L					-	-	-	1920
	Conductivity	µs/cm					-	-	-	9760
	Lead	mg/L					-	-	-	<0.001
	Magnesium	mg/L					-	-	-	176
	Nitrate	mg/L					-	-	-	1.49
	Potassium	mg/L					-	-	-	25
	Sodium	mg/L					-	-	-	2170
	Standing Water Level	m					-	-	-	6.68
	Sulphate	mg/L					-	-	-	1060
pH	pH	-	-	-	8.15					
9	Ammonia	mg/L	Quarterly (P2) (Mar, Jun, Sep, Dec)	1*	28/07/2025	04/08/2025	-	-	-	2.14
	Bicarbonate	mg/L					-	-	-	<1
	Calcium	mg/L					-	-	-	295
	Chloride	mg/L					-	-	-	1010



### WHITEHAVEN CHPP – MONTHLY MONITORING SUMMARY

EPL ID	Pollutant	Units of Measure	Monitoring Frequency	No. of Samples for the Period	Date Sampled	Date Obtained	Min Value	Mean Value	Median Value	Max or Only Value
	Conductivity	µs/cm					-	-	-	5870
	Lead	mg/L					-	-	-	<0.001
	Magnesium	mg/L					-	-	-	220
	Nitrate	mg/L					-	-	-	0.04
	Potassium	mg/L					-	-	-	122
	Sodium	mg/L					-	-	-	712
	Standing Water Level	M					-	-	-	1.43
	Sulphate	mg/L					-	-	-	654
	pH	pH					-	-	-	6.96
10	Ammonia	mg/L	Quarterly (P3) (Mar, Jun, Sep, Dec)	1*	28/07/2025	04/08/2025	-	-	-	3.07
	Bicarbonate	mg/L					-	-	-	<1
	Calcium	mg/L					-	-	-	240
	Chloride	mg/L					-	-	-	1270
	Conductivity	µs/cm					-	-	-	6020
	Lead	mg/L					-	-	-	<0.001
	Magnesium	mg/L					-	-	-	212
	Nitrate	mg/L					-	-	-	2.58
	Potassium	mg/L					-	-	-	62
	Sodium	mg/L					-	-	-	733
	Standing Water Level	M					-	-	-	1.02
	Sulphate	mg/L					-	-	-	260
	pH	pH					-	-	-	7.43

\*Sample was taken in June however was re-sampled in July due to lab analysis error.



## WHITEHAVEN CHPP – MONTHLY MONITORING SUMMARY

Table 3 – Monitoring (Quarterly Noise – Limits Apply)

(Mar, Jun, Sep, Dec)

EPL ID	Date	Measurement Period	Measured levels – CHPP – dB(A)		Limit(s)- dB(A)	Wind speed (m/s)	Observations	(Potential) Non-compliance /breach
			LA1, 1 minute	LAeq, 15 minute				
N1	-	15 mins day	-	-	35	-	-	-
		15 mins evening	-	-	35	-	-	
		15 mins night	-	-	35	-	-	
		1 min night	-	-	45	-	-	

**Notes:**

**dB(A):** The overall level of a sound is usually expressed in terms of dBA, which is measured using a sound level meter with an “A-weighting” filter. This is an electronic filter having a frequency response corresponding approximately to that of human hearing.

**LAeq, 15 minute:** The A-weighted equivalent noise level (basically the average noise level). It is defined as the steady sound level that contains the same amount of acoustical energy as the corresponding time-varying sound, in this instance over a period of 15 minutes.

**LA1, 1 minute:** The noise level exceeded for 1% of the 15 minute interval.

**I/A:** When site noise is noted as inaudible (I/A), no site noise was audible at the monitoring location.

**Not Measurable (NM):** indicates that some site noise was audible, but indeterminate due to one of the following reasons:


- site noise levels were insignificant and unlikely, in many cases, to be even noticed; or
- site noise levels were masked by another relatively loud noise source, but were estimated to be less than LAeq 30 dB, which is insignificant in terms of any applicable criterion.



# WHITEHAVEN COAL

## WHITEHAVEN CHPP – MONTHLY MONITORING SUMMARY



 <b>WHITEHAVEN COAL</b>	<p align="center"><b>Figure 1</b> <b>Gunnedah CHPP EPL3637</b> <b>Monitoring Locations</b></p>	<p>0      250      500          ───────────          Meters</p>
<p>Datum MGA2020 Zone 56    Author O.Hulbert          Image Nov-22    Date Jan-23    Size/Scale 1:13000</p>		<p>● CHPP_EPL_Sites_Feb23</p>



## WHITEHAVEN CHPP – MONTHLY MONITORING SUMMARY

### Site Information

**EPL No:** 3637

**EPA Website Link:** <http://www.epa.nsw.gov.au/prpoeoapp/ViewPOEOLicence.aspx?DOCID=33514&SYSUID=1&LICID=3637>

**Licensee:** Whitehaven Coal Mining Limited

**Licensee Address:** Boggabri Road, Gunnedah NSW 2380

**EPL Monitoring Points:** See Figure 1 below

**Sampling Period:** August 2025

**Obtained Date:** 11<sup>th</sup> September 2025

**Publication Date:** 15<sup>th</sup> September 2025

**Table 1 - No Pollutant Limits Apply**

EPL ID	Pollutant	Units of Measure	Monitoring Frequency	No. of Measurements for the Month	Date Sampled	Date Obtained	Min Value	Mean Value	Median Value	Max or Only Value
3	Solid Particles	g/m <sup>2</sup> /month	Continuous	1	07/08/2025	02/09/2025	-	-	-	0.8
11	PM <sub>10</sub> Kendo	µg/m <sup>3</sup>	Every 6 days	5	04/08/2025 10/08/2025 16/08/2025 22/08/2025 28/08/2025	11/09/2025 (Last sampled received)	1.60	3.88	4.70	5.80
12	PM <sub>10</sub> Olive View	µg/m <sup>3</sup>	Every 6 days	5	04/08/2025 10/08/2025 16/08/2025 22/08/2025 28/08/2025	11/09/2025 (Last sampled received)	1.00	5.44	5.70	10.00
6	Conductivity (Field)	µs/cm	Each overflow event	1	03/08/2025	08/08/2025	-	-	-	1228
	Oil and Grease	mg/L					-	-	-	<5
	Total Organic Carbon	mg/L					-	-	-	7
	Total Suspended Solids	mg/L					-	-	-	39
	pH (Field)	pH					-	-	-	7.04
7	Conductivity (Field)	µs/cm	Quarterly (Feb, May, Aug, Nov)	1	07/08/2025	14/08/2025	-	-	-	1300
	Oil and Grease	mg/L					-	-	-	<5
	Total Organic Carbon	mg/L					-	-	-	8



### WHITEHAVEN CHPP – MONTHLY MONITORING SUMMARY

EPL ID	Pollutant	Units of Measure	Monitoring Frequency	No. of Measurements for the Month	Date Sampled	Date Obtained	Min Value	Mean Value	Median Value	Max or Only Value
	Total Suspended Solids	mg/L					-	-	-	26
	pH (Field)	pH					-	-	-	7.97

Table 2 – Groundwater Monitoring (Quarterly – No Limits apply)

EPL ID	Pollutant	Units of Measure	Monitoring Frequency	No. of Samples for the Period	Date Sampled	Date Obtained	Min Value	Mean Value	Median Value	Max or Only Value
8	Ammonia	mg/L	Quarterly (P1) (Mar, Jun, Sep, Dec)	0	-	-	-	-	-	-
	Bicarbonate	mg/L					-	-	-	-
	Calcium	mg/L					-	-	-	-
	Chloride	mg/L					-	-	-	-
	Conductivity	µs/cm					-	-	-	-
	Lead	mg/L					-	-	-	-
	Magnesium	mg/L					-	-	-	-
	Nitrate	mg/L					-	-	-	-
	Potassium	mg/L					-	-	-	-
	Sodium	mg/L					-	-	-	-
	Standing Water Level	m					-	-	-	-
	Sulphate	mg/L					-	-	-	-
pH	pH	-	-	-	-					
9	Ammonia	mg/L	Quarterly (P2) (Mar, Jun, Sep, Dec)	0	-	-	-	-	-	-
	Bicarbonate	mg/L					-	-	-	-
	Calcium	mg/L					-	-	-	-
	Chloride	mg/L					-	-	-	-



### WHITEHAVEN CHPP – MONTHLY MONITORING SUMMARY

EPL ID	Pollutant	Units of Measure	Monitoring Frequency	No. of Samples for the Period	Date Sampled	Date Obtained	Min Value	Mean Value	Median Value	Max or Only Value
	Conductivity	µs/cm					-	-	-	-
	Lead	mg/L					-	-	-	-
	Magnesium	mg/L					-	-	-	-
	Nitrate	mg/L					-	-	-	-
	Potassium	mg/L					-	-	-	-
	Sodium	mg/L					-	-	-	-
	Standing Water Level	M					-	-	-	-
	Sulphate	mg/L					-	-	-	-
	pH	pH					-	-	-	-
10	Ammonia	mg/L	Quarterly (P3) (Mar, Jun, Sep, Dec)	0	-	-	-	-	-	-
	Bicarbonate	mg/L					-	-	-	-
	Calcium	mg/L					-	-	-	-
	Chloride	mg/L					-	-	-	-
	Conductivity	µs/cm					-	-	-	-
	Lead	mg/L					-	-	-	-
	Magnesium	mg/L					-	-	-	-
	Nitrate	mg/L					-	-	-	-
	Potassium	mg/L					-	-	-	-
	Sodium	mg/L					-	-	-	-
	Standing Water Level	M					-	-	-	-
	Sulphate	mg/L					-	-	-	-
	pH	pH					-	-	-	-

\*Sample was taken in June however was re-sampled in July due to lab analysis error.



## WHITEHAVEN CHPP – MONTHLY MONITORING SUMMARY

Table 3 – Monitoring (Quarterly Noise – Limits Apply)

(Mar, Jun, Sep, Dec)

EPL ID	Date	Measurement Period	Measured levels – CHPP – dB(A)		Limit(s)- dB(A)	Wind speed (m/s)	Observations	(Potential) Non-compliance /breach
			LA1, 1 minute	LAeq, 15 minute				
N1	-	15 mins day	-	-	35	-	-	-
		15 mins evening	-	-	35	-	-	
		15 mins night	-	-	35	-	-	
		1 min night	-	-	45	-	-	

**Notes:**

**dB(A):** The overall level of a sound is usually expressed in terms of dBA, which is measured using a sound level meter with an “A-weighting” filter. This is an electronic filter having a frequency response corresponding approximately to that of human hearing.

**LAeq, 15 minute:** The A-weighted equivalent noise level (basically the average noise level). It is defined as the steady sound level that contains the same amount of acoustical energy as the corresponding time-varying sound, in this instance over a period of 15 minutes.

**LA1, 1 minute:** The noise level exceeded for 1% of the 15 minute interval.

**I/A:** When site noise is noted as inaudible (I/A), no site noise was audible at the monitoring location.

**Not Measurable (NM):** indicates that some site noise was audible, but indeterminate due to one of the following reasons:


- site noise levels were insignificant and unlikely, in many cases, to be even noticed; or
- site noise levels were masked by another relatively loud noise source, but were estimated to be less than LAeq 30 dB, which is insignificant in terms of any applicable criterion.



# WHITEHAVEN COAL

## WHITEHAVEN CHPP – MONTHLY MONITORING SUMMARY



 <b>WHITEHAVEN COAL</b>	<p align="center"><b>Figure 1</b> <b>Gunnedah CHPP EPL3637</b> <b>Monitoring Locations</b></p>	<p>0      250      500          ───────────          Meters</p>
<p>Datum MGA2020 Zone 56    Author O.Hulbert          Image Nov-22    Date Jan-23    Size/Scale 1:13000</p>		<p>● CHPP_EPL_Sites_Feb23</p>



## WHITEHAVEN CHPP – MONTHLY MONITORING SUMMARY

### Site Information

EPL No: 3637

EPA Website Link: <http://www.epa.nsw.gov.au/prpoeoapp/ViewPOEOLicence.aspx?DOCID=33514&SYSUID=1&LICID=3637>

Licensee: Whitehaven Coal Mining Limited

Licensee Address: Boggabri Road, Gunnedah NSW 2380

EPL Monitoring Points: See Figure 1 below

Sampling Period: September 2025

Obtained Date: 11<sup>th</sup> October 2025

Publication Date: 14<sup>th</sup> October 2025

**Table 1 - No Pollutant Limits Apply**

EPL ID	Pollutant	Units of Measure	Monitoring Frequency	No. of Measurements for the Month	Date Sampled	Date Obtained	Min Value	Mean Value	Median Value	Max or Only Value
3	Solid Particles	g/m <sup>2</sup> /month	Continuous	1	08/09/2025	30/09/2025	-	-	-	0.5
11	PM <sub>10</sub> Kendo	µg/m <sup>3</sup>	Every 6 days	5	03/09/2025 09/09/2025 15/09/2025 21/09/2025 27/09/2025	11/10/2025 (Last sampled received)	5.20	13.30	14.70	20.80
12	PM <sub>10</sub> Olive View	µg/m <sup>3</sup>	Every 6 days	5	03/09/2025 09/09/2025 15/09/2025 21/09/2025 27/09/2025	11/10/2025 (Last sampled received)	6.40	11.38	8.90	17.30
6	Conductivity (Field)	µs/cm	Each overflow event	0	-	-	-	-	-	-
	Oil and Grease	mg/L					-	-	-	-
	Total Organic Carbon	mg/L					-	-	-	-
	Total Suspended Solids	mg/L					-	-	-	-
	pH (Field)	pH					-	-	-	-
7	Conductivity (Field)	µs/cm	Quarterly (Feb, May, Aug, Nov)	0	-	-	-	-	-	-
	Oil and Grease	mg/L					-	-	-	-
	Total Organic Carbon	mg/L					-	-	-	-



### WHITEHAVEN CHPP – MONTHLY MONITORING SUMMARY

EPL ID	Pollutant	Units of Measure	Monitoring Frequency	No. of Measurements for the Month	Date Sampled	Date Obtained	Min Value	Mean Value	Median Value	Max or Only Value
	Total Suspended Solids	mg/L					-	-	-	-
	pH (Field)	pH					-	-	-	-

Table 2 – Groundwater Monitoring (Quarterly – No Limits apply)

EPL ID	Pollutant	Units of Measure	Monitoring Frequency	No. of Samples for the Period	Date Sampled	Date Obtained	Min Value	Mean Value	Median Value	Max or Only Value
8	Ammonia	mg/L	Quarterly (P1) (Mar, Jun, Sep, Dec)	1	08/09/2025	15/09/2025	-	-	-	0.02
	Bicarbonate	mg/L					-	-	-	1330
	Calcium	mg/L					-	-	-	64
	Chloride	mg/L					-	-	-	1990
	Conductivity	µs/cm					-	-	-	9730
	Lead	mg/L					-	-	-	<0.001
	Magnesium	mg/L					-	-	-	182
	Nitrate	mg/L					-	-	-	1.32
	Potassium	mg/L					-	-	-	24
	Sodium	mg/L					-	-	-	2060
	Standing Water Level	m					-	-	-	6.17
	Sulphate	mg/L					-	-	-	1480
pH	pH	-	-	-	7.98					
9	Ammonia	mg/L	Quarterly (P2) (Mar, Jun, Sep, Dec)	1	08/09/2025	15/09/2025	-	-	-	3.45
	Bicarbonate	mg/L					-	-	-	986
	Calcium	mg/L					-	-	-	282
	Chloride	mg/L					-	-	-	1150



### WHITEHAVEN CHPP – MONTHLY MONITORING SUMMARY

EPL ID	Pollutant	Units of Measure	Monitoring Frequency	No. of Samples for the Period	Date Sampled	Date Obtained	Min Value	Mean Value	Median Value	Max or Only Value
	Conductivity	µs/cm					-	-	-	6000
	Lead	mg/L					-	-	-	<0.001
	Magnesium	mg/L					-	-	-	233
	Nitrate	mg/L					-	-	-	0.22
	Potassium	mg/L					-	-	-	122
	Sodium	mg/L					-	-	-	694
	Standing Water Level	M					-	-	-	2.11
	Sulphate	mg/L					-	-	-	663
	pH	pH					-	-	-	7.08
10	Ammonia	mg/L	Quarterly (P3) (Mar, Jun, Sep, Dec)	1	08/09/2025	15/09/2025	-	-	-	0.37
	Bicarbonate	mg/L					-	-	-	749
	Calcium	mg/L					-	-	-	243
	Chloride	mg/L					-	-	-	1430
	Conductivity	µs/cm					-	-	-	5920
	Lead	mg/L					-	-	-	<0.001
	Magnesium	mg/L					-	-	-	228
	Nitrate	mg/L					-	-	-	13.7
	Potassium	mg/L					-	-	-	63
	Sodium	mg/L					-	-	-	720
	Standing Water Level	M					-	-	-	0.88
	Sulphate	mg/L					-	-	-	285
	pH	pH					-	-	-	7.11



## WHITEHAVEN CHPP – MONTHLY MONITORING SUMMARY

**Table 3 – Monitoring (Quarterly Noise – Limits Apply)**

(Mar, Jun, Sep, Dec)

EPL ID	Date	Measurement Period	Measured levels – CHPP – dB(A)		Limit(s)- dB(A)	Wind speed (m/s)	Observations	(Potential) Non-compliance /breach
			LA1, 1 minute	LAeq, 15 minute				
N1	11/09/2025	15 mins day	-	I/A	35	1.9	Birds 66-67, Wind 30-37 Traffic 35-42	No
		15 mins evening	-	30	35	Calm	Traffic 35, Dozer operations 30-32 General site activity 28-30, Onsite reverse alarm 29-31	
		15 mins night	-	29	35	0.9	General site activity 28-30, Dozer operations 30-37, Animals 35-44, Wind 37-40	
		1 min night	37	-	45			

**Notes:**

**dB(A):** The overall level of a sound is usually expressed in terms of dBA, which is measured using a sound level meter with an “A-weighting” filter. This is an electronic filter having a frequency response corresponding approximately to that of human hearing.

**LAeq, 15 minute:** The A-weighted equivalent noise level (basically the average noise level). It is defined as the steady sound level that contains the same amount of acoustical energy as the corresponding time-varying sound, in this instance over a period of 15 minutes.

**LA1, 1 minute:** The noise level exceeded for 1% of the 15 minute interval.

**I/A:** When site noise is noted as inaudible (I/A), no site noise was audible at the monitoring location.

**Not Measurable (NM):** indicates that some site noise was audible, but indeterminate due to one of the following reasons:

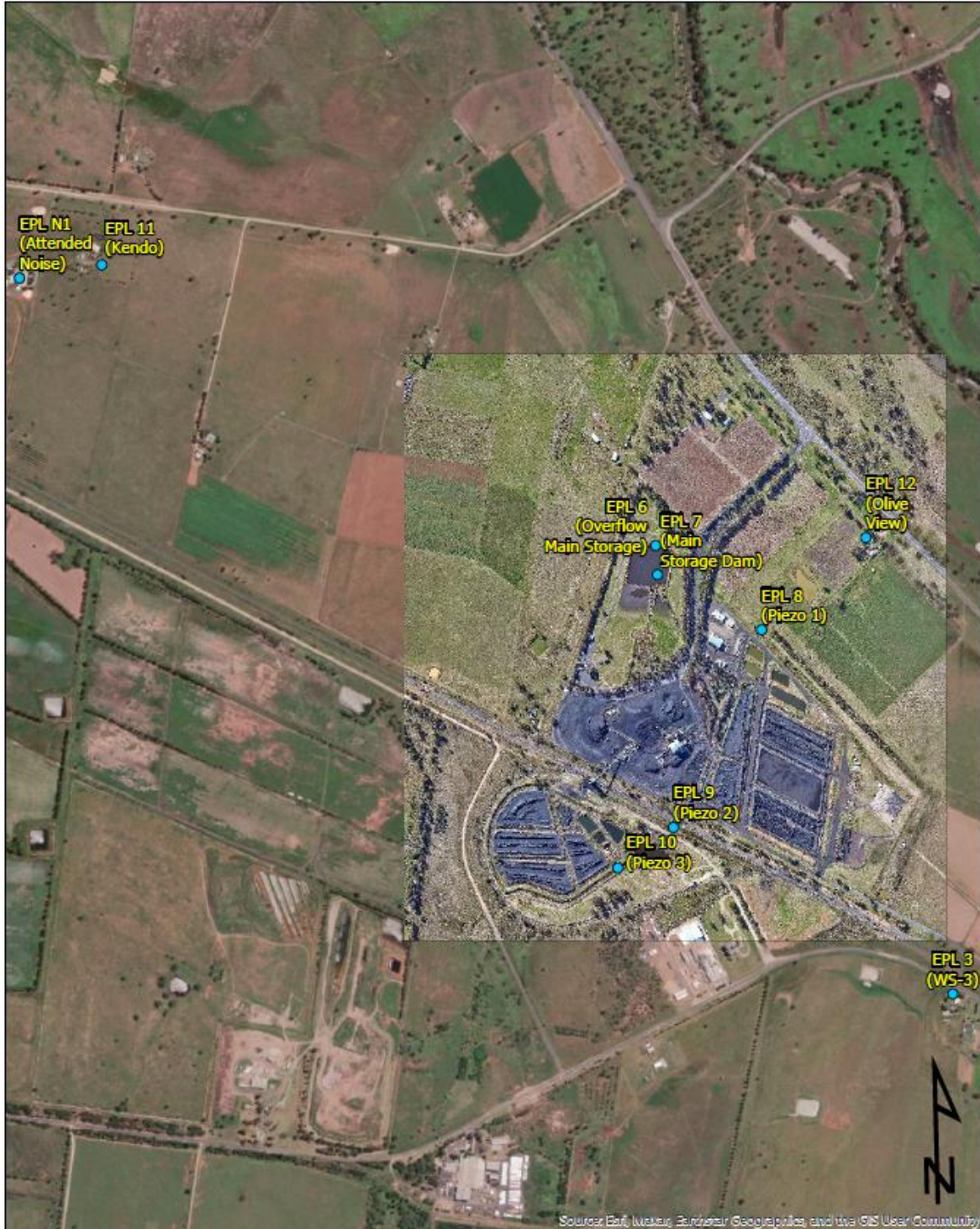
• site noise levels were insignificant and unlikely, in many cases, to be even noticed; or

• site noise levels were masked by another relatively loud noise source, but were estimated to be less than LAeq 30 dB, which is insignificant in terms of any applicable criterion.



# WHITEHAVEN COAL

## WHITEHAVEN CHPP – MONTHLY MONITORING SUMMARY

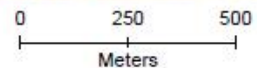


 **WHITEHAVEN COAL**

Datum MGA2020 Zone 56 Author O.Hulbert

Image Nov-22 Date Jan-23 Size/Scale 1:13000

**Figure 1**  
**Gunnedah CHPP EPL3637**  
**Monitoring Locations**



● CHPP\_EPL\_Sites\_Feb23



## WHITEHAVEN CHPP – MONTHLY MONITORING SUMMARY

### Site Information

EPL No: 3637

EPA Website Link: <http://www.epa.nsw.gov.au/prpoeoapp/ViewPOEOLicence.aspx?DOCID=33514&SYSUID=1&LICID=3637>

Licensee: Whitehaven Coal Mining Limited

Licensee Address: Boggabri Road, Gunnedah NSW 2380

EPL Monitoring Points: See Figure 1 below

Sampling Period: October 2025

Obtained Date: 6<sup>th</sup> November 2025

Publication Date: 11<sup>th</sup> November 2025

**Table 1 - No Pollutant Limits Apply**

EPL ID	Pollutant	Units of Measure	Monitoring Frequency	No. of Measurements for the Month	Date Sampled	Date Obtained	Min Value	Mean Value	Median Value	Max or Only Value
3	Solid Particles	g/m <sup>2</sup> /month	Continuous	1	08/10/2025	04/11/2025	-	-	-	1.8
11	PM <sub>10</sub> Kendo	µg/m <sup>3</sup>	Every 6 days	5	03/10/2025 09/10/2025 15/10/2025 21/10/2025 27/10/2025	06/11/2025 (Last sampled received)	7.60	20.56	20.90	31.90
12	PM <sub>10</sub> Olive View	µg/m <sup>3</sup>	Every 6 days	5	03/10/2025 09/10/2025 15/10/2025 21/10/2025 27/10/2025	06/11/2025 (Last sampled received)	14.60	22.42	22.00	33.90
6	Conductivity (Field)	µs/cm	Each overflow event	0	-	-	-	-	-	-
	Oil and Grease	mg/L					-	-	-	-
	Total Organic Carbon	mg/L					-	-	-	-
	Total Suspended Solids	mg/L					-	-	-	-
	pH (Field)	pH					-	-	-	-
7	Conductivity (Field)	µs/cm	Quarterly (Feb, May, Aug, Nov)	0	-	-	-	-	-	-
	Oil and Grease	mg/L					-	-	-	-
	Total Organic Carbon	mg/L					-	-	-	-



# WHITEHAVEN COAL

## WHITEHAVEN CHPP – MONTHLY MONITORING SUMMARY

EPL ID	Pollutant	Units of Measure	Monitoring Frequency	No. of Measurements for the Month	Date Sampled	Date Obtained	Min Value	Mean Value	Median Value	Max or Only Value
	Total Suspended Solids	mg/L					-	-	-	-
	pH (Field)	pH					-	-	-	-

Table 2 – Groundwater Monitoring (Quarterly – No Limits apply)

EPL ID	Pollutant	Units of Measure	Monitoring Frequency	No. of Samples for the Period	Date Sampled	Date Obtained	Min Value	Mean Value	Median Value	Max or Only Value
8	Ammonia	mg/L	Quarterly (P1) (Mar, Jun, Sep, Dec)	0	-	-	-	-	-	-
	Bicarbonate	mg/L					-	-	-	-
	Calcium	mg/L					-	-	-	-
	Chloride	mg/L					-	-	-	-
	Conductivity	µs/cm					-	-	-	-
	Lead	mg/L					-	-	-	-
	Magnesium	mg/L					-	-	-	-
	Nitrate	mg/L					-	-	-	-
	Potassium	mg/L					-	-	-	-
	Sodium	mg/L					-	-	-	-
	Standing Water Level	m					-	-	-	-
	Sulphate	mg/L					-	-	-	-
pH	pH	-	-	-	-					
9	Ammonia	mg/L	Quarterly (P2) (Mar, Jun, Sep, Dec)	0	-	-	-	-	-	-
	Bicarbonate	mg/L					-	-	-	-
	Calcium	mg/L					-	-	-	-
	Chloride	mg/L					-	-	-	-



# WHITEHAVEN COAL

## WHITEHAVEN CHPP – MONTHLY MONITORING SUMMARY

EPL ID	Pollutant	Units of Measure	Monitoring Frequency	No. of Samples for the Period	Date Sampled	Date Obtained	Min Value	Mean Value	Median Value	Max or Only Value
	Conductivity	µs/cm					-	-	-	-
	Lead	mg/L					-	-	-	-
	Magnesium	mg/L					-	-	-	-
	Nitrate	mg/L					-	-	-	-
	Potassium	mg/L					-	-	-	-
	Sodium	mg/L					-	-	-	-
	Standing Water Level	M					-	-	-	-
	Sulphate	mg/L					-	-	-	-
	pH	pH					-	-	-	-
10	Ammonia	mg/L	Quarterly (P3) (Mar, Jun, Sep, Dec)	0	-	-	-	-	-	-
	Bicarbonate	mg/L					-	-	-	-
	Calcium	mg/L					-	-	-	-
	Chloride	mg/L					-	-	-	-
	Conductivity	µs/cm					-	-	-	-
	Lead	mg/L					-	-	-	-
	Magnesium	mg/L					-	-	-	-
	Nitrate	mg/L					-	-	-	-
	Potassium	mg/L					-	-	-	-
	Sodium	mg/L					-	-	-	-
	Standing Water Level	M					-	-	-	-
	Sulphate	mg/L					-	-	-	-
	pH	pH					-	-	-	-



## WHITEHAVEN CHPP – MONTHLY MONITORING SUMMARY

Table 3 – Monitoring (Quarterly Noise – Limits Apply)

(Mar, Jun, Sep, Dec)

EPL ID	Date	Measurement Period	Measured levels – CHPP – dB(A)		Limit(s)- dB(A)	Wind speed (m/s)	Observations	(Potential) Non-compliance /breach
			LA1, 1 minute	LAeq, 15 minute				
N1	-	15 mins day	-	-	35	-	-	No
		15 mins evening	-	-	35	-	-	
		15 mins night	-	-	35	-	-	
		1 min night	-	-	45	-	-	

**Notes:**

**dB(A):** The overall level of a sound is usually expressed in terms of dBA, which is measured using a sound level meter with an “A-weighting” filter. This is an electronic filter having a frequency response corresponding approximately to that of human hearing.

**LAeq, 15 minute:** The A-weighted equivalent noise level (basically the average noise level). It is defined as the steady sound level that contains the same amount of acoustical energy as the corresponding time-varying sound, in this instance over a period of 15 minutes.

**LA1, 1 minute:** The noise level exceeded for 1% of the 15 minute interval.

**I/A:** When site noise is noted as inaudible (I/A), no site noise was audible at the monitoring location.

**Not Measurable (NM):** indicates that some site noise was audible, but indeterminate due to one of the following reasons:


- site noise levels were insignificant and unlikely, in many cases, to be even noticed; or
- site noise levels were masked by another relatively loud noise source, but were estimated to be less than LAeq 30 dB, which is insignificant in terms of any applicable criterion.



# WHITEHAVEN COAL

## WHITEHAVEN CHPP – MONTHLY MONITORING SUMMARY



 <b>WHITEHAVEN COAL</b>	<p align="center"><b>Figure 1</b> <b>Gunnedah CHPP EPL3637</b> <b>Monitoring Locations</b></p>	<p>0      250      500          ───────────          Meters</p>
<p>Datum MGA2020 Zone 56    Author O.Hulbert          Image Nov-22    Date Jan-23    Size/Scale 1:13000</p>		<p>● CHPP_EPL_Sites_Feb23</p>



## WHITEHAVEN CHPP – MONTHLY MONITORING SUMMARY

### Site Information

EPL No: 3637

EPA Website Link: <http://www.epa.nsw.gov.au/prpoeoapp/ViewPOEOLicence.aspx?DOCID=33514&SYSUID=1&LICID=3637>

Licensee: Whitehaven Coal Mining Limited

Licensee Address: Boggabri Road, Gunnedah NSW 2380

EPL Monitoring Points: See Figure 1 below

Sampling Period: November 2025

Obtained Date: 1<sup>st</sup> December 2025

Publication Date: 16<sup>th</sup> December 2025

**Table 1 - No Pollutant Limits Apply**

EPL ID	Pollutant	Units of Measure	Monitoring Frequency	No. of Measurements for the Month	Date Sampled	Date Obtained	Min Value	Mean Value	Median Value	Max or Only Value
3	Solid Particles	g/m <sup>2</sup> /month	Continuous	1	06/11/2025	01/12/2025	-	-	-	2.9
11	PM <sub>10</sub> Kendo	µg/m <sup>3</sup>	Every 6 days	4*	02/10/2025 08/10/2025 14/10/2025 20/10/2025	01/12/2025 (Last sampled received)	11.00	19.00	20.60	23.80
12	PM <sub>10</sub> Olive View	µg/m <sup>3</sup>	Every 6 days	4*	02/10/2025 08/10/2025 14/10/2025 20/10/2025	01/12/2025 (Last sampled received)	9.30	17.73	19.55	22.50
6	Conductivity (Field)	µs/cm	Each overflow event	0	-	-	-	-	-	-
	Oil and Grease	mg/L					-	-	-	-
	Total Organic Carbon	mg/L					-	-	-	-
	Total Suspended Solids	mg/L					-	-	-	-
	pH (Field)	pH					-	-	-	-
7	Conductivity (Field)	µs/cm	Quarterly (Feb, May, Aug, Nov)	1	06/11/2025	13/11/2025	-	-	-	1460
	Oil and Grease	mg/L					-	-	-	<5
	Total Organic Carbon	mg/L					-	-	-	8
	Total Suspended Solids	mg/L					-	-	-	39



### WHITEHAVEN CHPP – MONTHLY MONITORING SUMMARY

EPL ID	Pollutant	Units of Measure	Monitoring Frequency	No. of Measurements for the Month	Date Sampled	Date Obtained	Min Value	Mean Value	Median Value	Max or Only Value
	pH (Field)	pH					-	-	-	9.01

\*Only 4 HVAS runs for the month due to storm power outage, December to contain make up run (6 runs)

Table 2 – Groundwater Monitoring (Quarterly – No Limits apply)

EPL ID	Pollutant	Units of Measure	Monitoring Frequency	No. of Samples for the Period	Date Sampled	Date Obtained	Min Value	Mean Value	Median Value	Max or Only Value
8	Ammonia	mg/L	Quarterly (P1) (Mar, Jun, Sep, Dec)	0	-	-	-	-	-	-
	Bicarbonate	mg/L					-	-	-	-
	Calcium	mg/L					-	-	-	-
	Chloride	mg/L					-	-	-	-
	Conductivity	µs/cm					-	-	-	-
	Lead	mg/L					-	-	-	-
	Magnesium	mg/L					-	-	-	-
	Nitrate	mg/L					-	-	-	-
	Potassium	mg/L					-	-	-	-
	Sodium	mg/L					-	-	-	-
	Standing Water Level	m					-	-	-	-
	Sulphate	mg/L					-	-	-	-
pH	pH	-	-	-	-					
9	Ammonia	mg/L	Quarterly (P2) (Mar, Jun, Sep, Dec)	0	-	-	-	-	-	-
	Bicarbonate	mg/L					-	-	-	-
	Calcium	mg/L					-	-	-	-
	Chloride	mg/L					-	-	-	-
	Conductivity	µs/cm					-	-	-	-



**WHITEHAVEN CHPP – MONTHLY MONITORING SUMMARY**

EPL ID	Pollutant	Units of Measure	Monitoring Frequency	No. of Samples for the Period	Date Sampled	Date Obtained	Min Value	Mean Value	Median Value	Max or Only Value
	Lead	mg/L					-	-	-	-
	Magnesium	mg/L					-	-	-	-
	Nitrate	mg/L					-	-	-	-
	Potassium	mg/L					-	-	-	-
	Sodium	mg/L					-	-	-	-
	Standing Water Level	M					-	-	-	-
	Sulphate	mg/L					-	-	-	-
	pH	pH					-	-	-	-
10	Ammonia	mg/L	Quarterly (P3) (Mar, Jun, Sep, Dec)	0	-	-	-	-	-	-
	Bicarbonate	mg/L					-	-	-	-
	Calcium	mg/L					-	-	-	-
	Chloride	mg/L					-	-	-	-
	Conductivity	µs/cm					-	-	-	-
	Lead	mg/L					-	-	-	-
	Magnesium	mg/L					-	-	-	-
	Nitrate	mg/L					-	-	-	-
	Potassium	mg/L					-	-	-	-
	Sodium	mg/L					-	-	-	-
	Standing Water Level	M					-	-	-	-
	Sulphate	mg/L					-	-	-	-
pH	pH	-	-	-	-					

Table 3 – Monitoring (Quarterly Noise – Limits Apply)



## WHITEHAVEN CHPP – MONTHLY MONITORING SUMMARY

(Mar, Jun, Sep, Dec)

EPL ID	Date	Measurement Period	Measured levels – CHPP – dB(A)		Limit(s)- dB(A)	Wind speed (m/s)	Observations	(Potential) Non-compliance /breach
			LA1, 1 minute	LAeq, 15 minute				
N1	-	15 mins day	-	-	35	-	-	No
		15 mins evening	-	-	35	-	-	
		15 mins night	-	-	35	-	-	
		1 min night	-	-	45	-	-	

Notes:

**dB(A):** The overall level of a sound is usually expressed in terms of dBA, which is measured using a sound level meter with an “A-weighting” filter. This is an electronic filter having a frequency response

corresponding approximately to that of human hearing.

**LAeq, 15 minute:** The A-weighted equivalent noise level (basically the average noise level). It is defined as the steady sound level that contains the same amount of acoustical energy as the corresponding time-varying sound, in this instance over a period of 15 minutes.

**LA1, 1 minute:** The noise level exceeded for 1% of the 15 minute interval.

**I/A:** When site noise is noted as inaudible (I/A), no site noise was audible at the monitoring location.

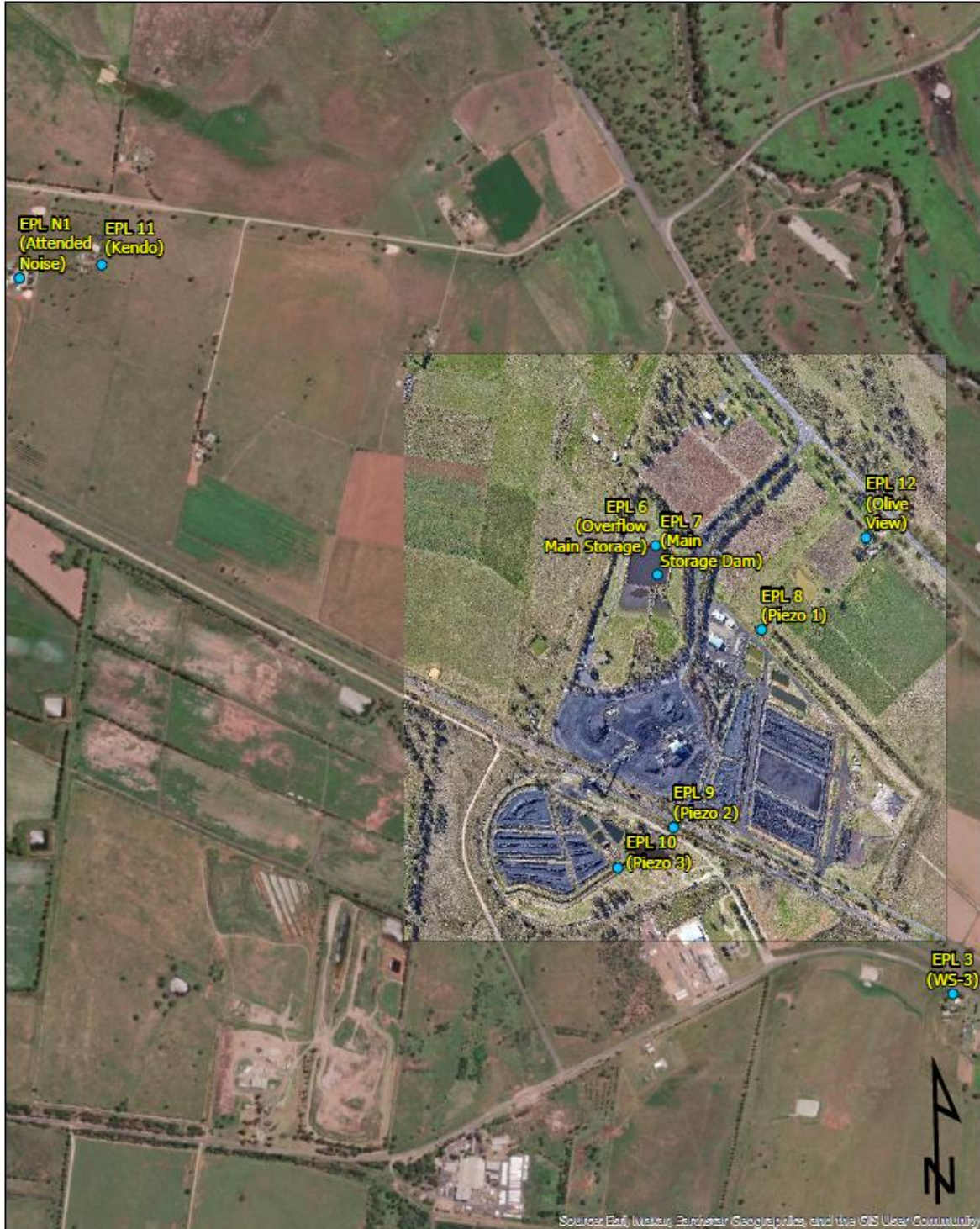
**Not Measurable (NM):** indicates that some site noise was audible, but indeterminate due to one of the following reasons:

- site noise levels were insignificant and unlikely, in many cases, to be even noticed; or
- site noise levels were masked by another relatively loud noise source, but were estimated to be less than LAeq 30 dB, which is insignificant in terms of any applicable criterion.



# WHITEHAVEN COAL

## WHITEHAVEN CHPP – MONTHLY MONITORING SUMMARY

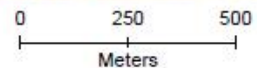


 **WHITEHAVEN COAL**

Datum MGA2020 Zone 56 Author O.Hulbert

Image Nov-22 Date Jan-23 Size/Scale 1:13000

**Figure 1**  
**Gunnedah CHPP EPL3637**  
**Monitoring Locations**



● CHPP\_EPL\_Sites\_Feb23



## WHITEHAVEN CHPP – MONTHLY MONITORING SUMMARY

### Site Information

EPL No: 3637

EPA Website Link: <http://www.epa.nsw.gov.au/prpoeoapp/ViewPOEOLicence.aspx?DOCID=33514&SYSUID=1&LICID=3637>

Licensee: Whitehaven Coal Mining Limited

Licensee Address: Boggabri Road, Gunnedah NSW 2380

EPL Monitoring Points: See Figure 1 below

Sampling Period: December 2025

Obtained Date: 15<sup>th</sup> January 2026

Publication Date: 22<sup>nd</sup> January 2026

**Table 1 - No Pollutant Limits Apply**

EPL ID	Pollutant	Units of Measure	Monitoring Frequency	No. of Measurements for the Month	Date Sampled	Date Obtained	Min Value	Mean Value	Median Value	Max or Only Value
3	Solid Particles	g/m <sup>2</sup> /month	Continuous	1	08/12/2025	12/01/2026	-	-	-	1.2
11	PM <sub>10</sub> Kendo	µg/m <sup>3</sup>	Every 6 days	6*	02/12/2025 04/12/2025* 08/12/2025 14/12/2025 20/12/2025 26/12/2025	15/01/2026 (Last sampled received)	3.90	11.50	9.30	24.50
12	PM <sub>10</sub> Olive View	µg/m <sup>3</sup>	Every 6 days	6*	02/12/2025 04/12/2025* 08/12/2025 14/12/2025 20/12/2025 26/12/2025	15/01/2026 (Last sampled received)	7.50	17.62	11.85	38.20
6	Conductivity (Field)	µs/cm	Each overflow event	0	-	-	-	-	-	-
	Oil and Grease	mg/L					-	-	-	-
	Total Organic Carbon	mg/L					-	-	-	-
	Total Suspended Solids	mg/L					-	-	-	-
	pH (Field)	pH					-	-	-	-
7	Conductivity (Field)	µs/cm	Quarterly	0	-	-	-	-	-	-
	Oil and Grease	mg/L					-	-	-	-



### WHITEHAVEN CHPP – MONTHLY MONITORING SUMMARY

EPL ID	Pollutant	Units of Measure	Monitoring Frequency	No. of Measurements for the Month	Date Sampled	Date Obtained	Min Value	Mean Value	Median Value	Max or Only Value
	Total Organic Carbon	mg/L	(Feb, May, Aug, Nov)				-	-	-	-
	Total Suspended Solids	mg/L					-	-	-	-
	pH (Field)	pH					-	-	-	-

\*Only 4 HVAS runs for November due to storm power outage, December to contain make up run (6 runs)

Table 2 – Groundwater Monitoring (Quarterly – No Limits apply)

EPL ID	Pollutant	Units of Measure	Monitoring Frequency	No. of Samples for the Period	Date Sampled	Date Obtained	Min Value	Mean Value	Median Value	Max or Only Value
8	Ammonia	mg/L	Quarterly (P1) (Mar, Jun, Sep, Dec)	1	08/12/2025	16/12/2025	-	-	-	0.02
	Bicarbonate	mg/L					-	-	-	1320
	Calcium	mg/L					-	-	-	51
	Chloride	mg/L					-	-	-	1990
	Conductivity	µs/cm					-	-	-	10540
	Lead	mg/L					-	-	-	<0.001
	Magnesium	mg/L					-	-	-	183
	Nitrate	mg/L					-	-	-	1.09
	Potassium	mg/L					-	-	-	26
	Sodium	mg/L					-	-	-	2090
	Standing Water Level	m					-	-	-	6.07
	Sulphate	mg/L					-	-	-	1360
pH	pH	-	-	-	7.83					
9	Ammonia	mg/L	Quarterly (P2)	1	08/12/2025	16/12/2025	-	-	-	2.18
	Bicarbonate	mg/L					-	-	-	967
	Calcium	mg/L					-	-	-	229



### WHITEHAVEN CHPP – MONTHLY MONITORING SUMMARY

EPL ID	Pollutant	Units of Measure	Monitoring Frequency	No. of Samples for the Period	Date Sampled	Date Obtained	Min Value	Mean Value	Median Value	Max or Only Value
	Chloride	mg/L	(Mar, Jun, Sep, Dec)				-	-	-	1200
	Conductivity	µs/cm					-	-	-	6310
	Lead	mg/L					-	-	-	<0.001
	Magnesium	mg/L					-	-	-	227
	Nitrate	mg/L					-	-	-	0.20
	Potassium	mg/L					-	-	-	115
	Sodium	mg/L					-	-	-	688
	Standing Water Level	M					-	-	-	1.76
	Sulphate	mg/L					-	-	-	782
	pH	pH					-	-	-	7.11
10	Ammonia	mg/L	Quarterly (P3) (Mar, Jun, Sep, Dec)	1	08/12/2025	16/12/2025	-	-	-	1.87
	Bicarbonate	mg/L					-	-	-	770
	Calcium	mg/L					-	-	-	199
	Chloride	mg/L					-	-	-	1410
	Conductivity	µs/cm					-	-	-	6250
	Lead	mg/L					-	-	-	<0.001
	Magnesium	mg/L					-	-	-	218
	Nitrate	mg/L					-	-	-	2.19
	Potassium	mg/L					-	-	-	61
	Sodium	mg/L					-	-	-	686
	Standing Water Level	M					-	-	-	1.08
	Sulphate	mg/L					-	-	-	247
	pH	pH					-	-	-	7.18



## WHITEHAVEN CHPP – MONTHLY MONITORING SUMMARY

**Table 3 – Monitoring (Quarterly Noise – Limits Apply)**

(Mar, Jun, Sep, Dec)

EPL ID	Date	Measurement Period	Measured levels – CHPP – dB(A)		Limit(s)- dB(A)	Wind speed (m/s)	Observations	(Potential) Non-compliance /breach
			LA1, 1 minute	LAeq, 15 minute				
N1	03/12/2025	15 mins day	-	N/M	35	2.1 m/s SE	Birds 50-57, Traffic 30-38 Aircraft 40	No
		15 mins evening	-	25	35	1.0 m/s SE	Dozer operation 25-28, Traffic 37-43 Insects 30-33, Aircraft 53	
		15 mins night	-	<25	35	0.4 m/s S	General site activity 20-25, Dozer operations 25, Insects 30-35 Traffic 32-47, Birds 40-44, Aircraft 45	
		1 min night	25	-	45			

**Notes:**

**dB(A):** The overall level of a sound is usually expressed in terms of dBA, which is measured using a sound level meter with an “A-weighting” filter. This is an electronic filter having a frequency response corresponding approximately to that of human hearing.

**LAeq, 15 minute:** The A-weighted equivalent noise level (basically the average noise level). It is defined as the steady sound level that contains the same amount of acoustical energy as the corresponding time-varying sound, in this instance over a period of 15 minutes.

**LA1, 1 minute:** The noise level exceeded for 1% of the 15 minute interval.

**I/A:** When site noise is noted as inaudible (I/A), no site noise was audible at the monitoring location.

**Not Measurable (NM):** indicates that some site noise was audible, but indeterminate due to one of the following reasons:

- site noise levels were insignificant and unlikely, in many cases, to be even noticed; or
- site noise levels were masked by another relatively loud noise source, but were estimated to be less than LAeq 30 dB, which is insignificant in terms of any applicable criterion.



# WHITEHAVEN COAL

## WHITEHAVEN CHPP – MONTHLY MONITORING SUMMARY

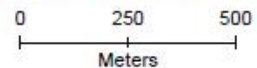


 **WHITEHAVEN COAL**

Datum MGA2020 Zone 56 Author O.Hulbert

Image Nov-22 Date Jan-23 Size/Scale 1:13000

**Figure 1**  
**Gunnedah CHPP EPL3637**  
**Monitoring Locations**



● CHPP\_EPL\_Sites\_Feb23